

EIT HEI Initiative

Innovation Capacity Building
for Higher Education



Strategy for European projects on greening mining and sustainable of Raw Materials

Trainers: Prof. M. Chalari & Ramonna Kosheleva

Navigating ESG: Building Sustainable Futures

Contents

- Introduction
- What is ESG
- Environmental factors
- Social factors
- Governance factors
- ESG integration
- Developing an ESG strategy
- Emerging ESG trends
- ESG in mining industry (video presentation)



ESG evolution



The 3 pillars

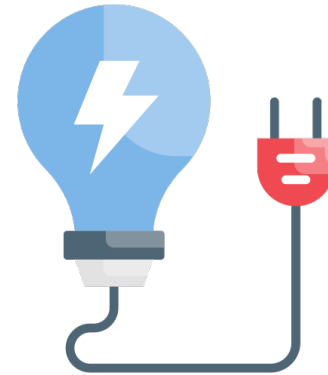
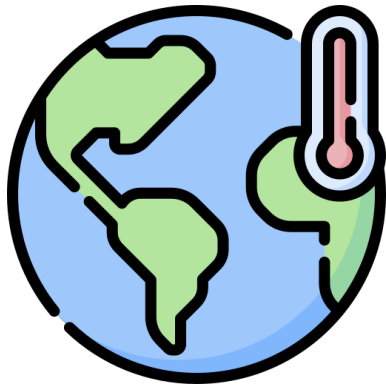
Focus on how a company interacts with and impacts people and communities. It involves promoting diversity and inclusion, ensuring fair labor practices, and contributing positively to society.



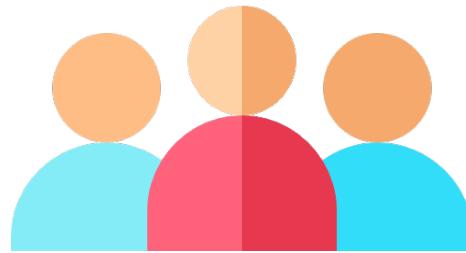
It involves assessing how a company manages its resource use, energy consumption, waste, emissions, and other environmental factors.

Governance is about the systems and structures that guide a company. It emphasizes transparency, ethical decision-making, and effective oversight by the leadership

Environmental factors



Social factors



Governance factors



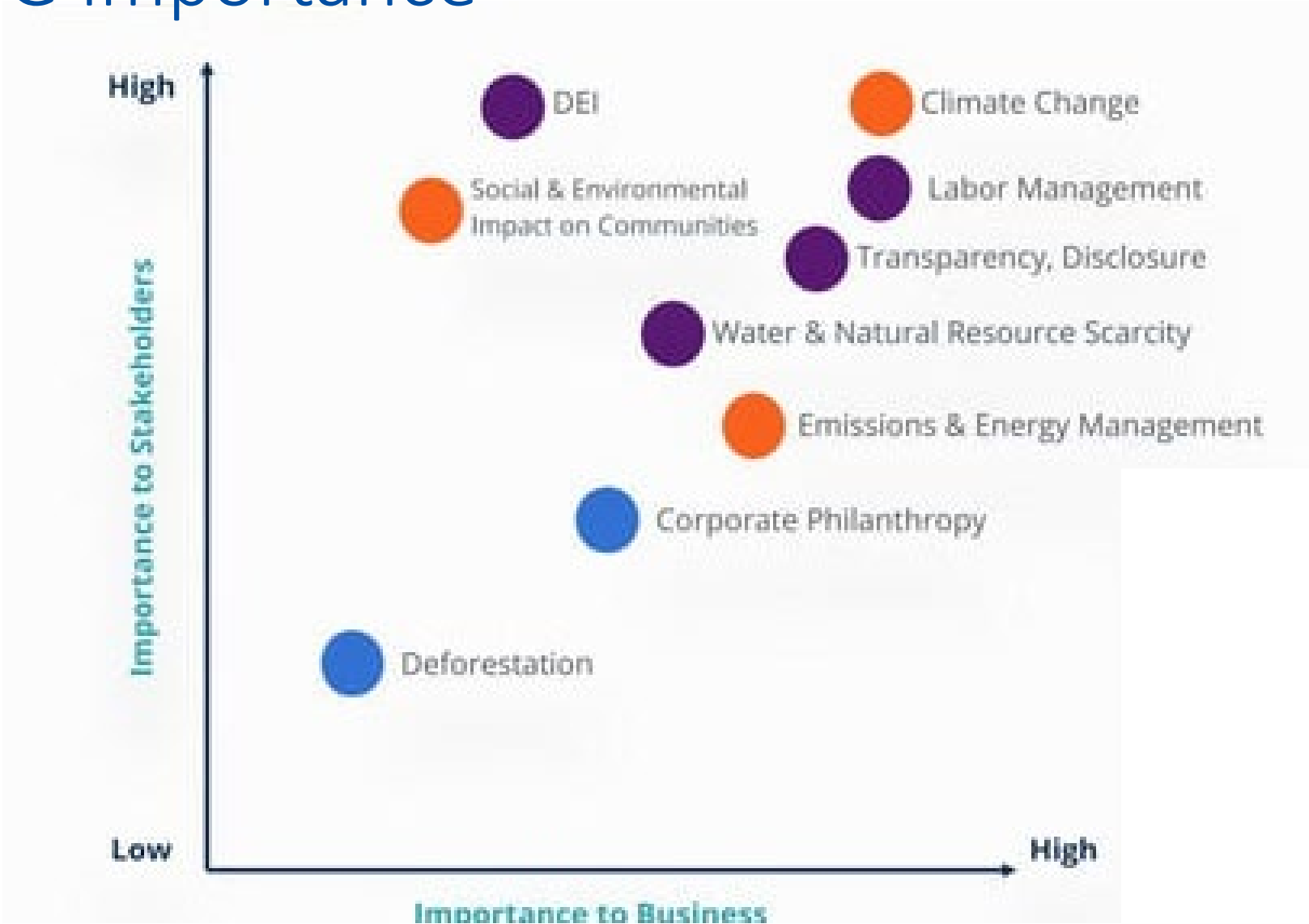
ESG integration



Integrating ESG into Investment Decisions



ESG importance

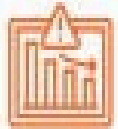


ESG importance

ESG has a significant positive impact on **fundamental business issues** relevant to the long-term success of any company across industries:



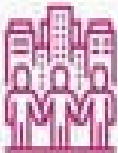
Corporate
Reputation



Risk Reduction



Opportunity
Management



Culture & Intrinsic
Value

ESG importance



**Corporate
Reputation**



Risk Reduction



**Opportunity
Management**



**Culture & Intrinsic
Value**

Corporate reputation is closely tied to a company's social responsibility.

Example: In 2018, personal data belonging to millions of Facebook users was collected without their consent by British consulting firm Cambridge Analytica, predominantly to be used for political advertising.

Huge loss for Facebook (725M\$)

ESG importance



Corporate Reputation



Risk Reduction



Opportunity Management



Culture & Intrinsic Value

ESG helps in identifying short and long term risks depending on the industry and business model.

ESG importance



Effectively managing opportunities within the ESG framework can lead to positive business outcomes, enhanced reputation, and long-term value creation.

- Innovation and Product Development
- Resource Efficiency
- Market Positioning
- Supply Chain Improvement
- Employee Engagement and Talent Attraction
- Brand Enhancement
- Access to Capital
- Partnerships and Collaborations

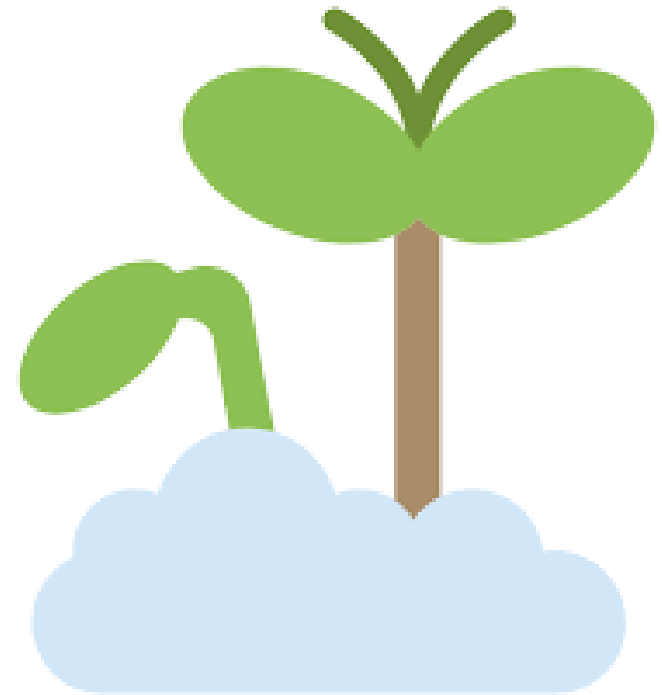
ESG importance



ESG maturity is an indicator of a company's commitment to building a high performing, purpose-driven workforce and inclusive culture.

ESG maturity level

- Compliance Focus
- Risk Management
- Operational Integration
- Stakeholder Engagement
- Strategic Alignment
- Innovation and Opportunity Recognition
- Measurable Impact
- Integration into Corporate Culture
- Leadership and Industry Influence
- Holistic Sustainability



Developing an ESG strategy

- Leadership Commitment
- Stakeholder Analysis
- Materiality Assessment
- Set Clear Objectives
- Integration with Business Strategy
- Risk Assessment



Developing an ESG strategy

- Innovation and Continuous Improvement
- Seek External Verification or Certification
- Engage with Investors
- Community Engagement
- Review and Adapt
- Engage Employees
- Data Collection and Measurement
- Report Transparently
- Engage Suppliers and Partners



ESG trends in 2023

- Climate Action and Net Zero Commitments
- Social Justice and Diversity, Equity, and Inclusion (DEI)
- Human Capital Management
- Supply Chain Resilience and Transparency
- Biodiversity and Nature-Based Solutions
- Circular Economy Practices